



## Boring bar blanks for the production of special tools

## Barre d'alésage pour la fabrication d'outils spéciaux

## Özel takım yapma amaçlı yarı mamul

## FORM A

Bestell-Nr. Order Nr. Référence Sipariş Nr.	SK	A	D	Euro
--	----	---	---	------

402.17.63.250	SK 40	250	63	
---------------	-------	-----	----	--

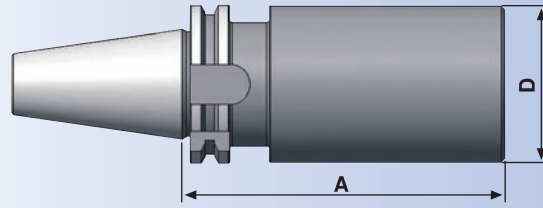
502.17.97.315	SK 50	315	97	
---------------	-------	-----	----	--

Ausführung : Steilkegel und Bund gehärtet (52+2 HRC) und geschliffen,  
Schaft weich zur weiteren Bearbeitung.

Version : Cone and flange hardened (52+2 HRC) and grinded.  
Soft body for later processing.

Version : Cône et collerette durcir (52+2 HRC) et rectifiés.  
Corps doux pour un usinage ultérieur.

Teknik özelliği : Konik ve Flanş kısmı sertleştirilmiş (52+2 HRC) ve taşlanmıştır.  
Bara kısmı işlenebilir yumuşaklıktadır.



## Kontrolldorne

## Test arbors

## Mandrins de contrôle

## Fener mili kontrol mastarı

## FORM A

Bestell-Nr. Order Nr. Référence Sipariş Nr.	SK	A	D	Euro
--	----	---	---	------

302.18.32.200	SK 30	200	32	
---------------	-------	-----	----	--

402.18.40.300	SK 40	300	40	
---------------	-------	-----	----	--

502.18.50.300	SK 50	300	50	
---------------	-------	-----	----	--

Lieferung : Im Holzkasten mit Prüfprotokoll

Included : Wooden Box with certificate

Inclus : Coffet en bois avec certificat

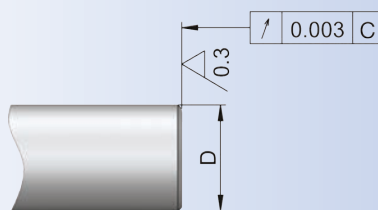
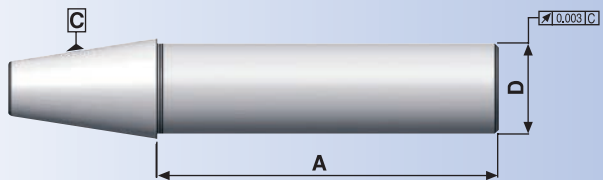
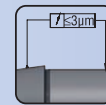
Teslim Şekli : Sandığı ve Kontrol Sertifikasıyla birlikte

Verwendung : Zur Abnahme von Werkzeugmaschinen  
gemäß ISO-Empfehlung R 230

Application : For acceptance tests of machine tools  
in accordance with ISO-recommendation R 230

Application : Pour la recette technique des machines  
conforme recommandation ISO R 230

Açıklama : Tezgahları devreye alırken ISO Normu R 230  
sisteminde uygunluğunu kontrol etmek için



Type G

Kontrolldorne können auch als Version "stirnseitig geschliffen" optional bestellt werden  
(Beispiel Bestellnummer: 402.18.40.300.G)

Test arbors can be ordered in version "face grinded" optionally  
(Example order code no.: 402.18.40.300.G)

Mandrins de contrôle peuvent être commandés avec version "front aiguiser" comme option  
(exemple commande no. 402.18.40.300.G)

İsteğe bağlı "alın taşlanmış" sipariş edilebilir.  
(Örnek Sipariş Nr.:402.18.40.300.G)