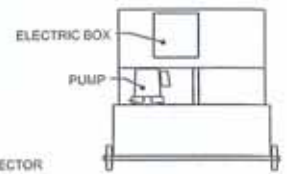
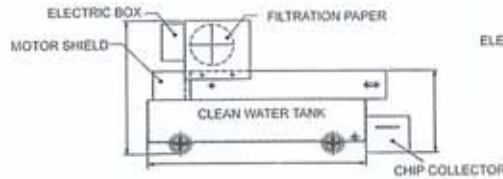
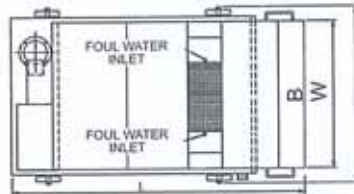




FEATURES

- Applicable to both ferrous and non-ferrous metals.
- Filtration effect depends on paper accuracy. Use 50µ, 30µ, or 15µ.
- Not suitable for heavy machining for the sake of paper consumption.
- To save filtration material, use magnetic filter for roung filtration.
- Standard accessory: one roll of paper.



ORDER NO.	DISPOSAL CAPACITY L/MIN	WATER TANK CAPACITY	L	A	B	C	W	H	PUMP		PAPER MOTOR	PAPER	REMARKS	N.W (kgs)	GW (kgs)	CODE NO.
									HP	OUTLET						
PF-20	20	100	1050	850	600	400	720	610	1/8	PF1/2"	25W	W:500MM L:90M	wheels attached	95	120	2020-001
PF-40	40	120	1200	1000	600	400	720	660	1/8	PF1/2"	25W			130	150	2020-002
PF-60	60	140	1350	1150	600	400	720	660	1/8	PF1/2"	25W			140	170	2020-003
PF-80	80	160	1500	1300	600	400	720	660	1/4	PF3/4"	25W			170	190	2020-004
PF-120	120	210	1500	1300	800	400	920	740	1/2	PF3/4"	40W	W:700MM L:90M		185	210	2020-005
PF-160	160	260	1800	1600	800	400	920	740	1/2	PF3/4"	40W			250	280	2020-006

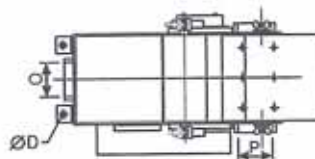
 Magnetic Separator

FEATURES

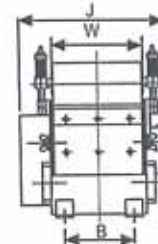
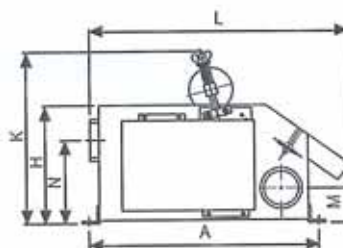
- Suitable in heavy machining for ferrous metal.
- No filtration-material consumption.
- Most economic in purchase & utilization cost.
- Able to serve rough filtration in other filtration process.



MC-60



MC-20~160



Standard accessories

- a. Chip collector 1pc
- b. plugs 2pc
- c. Elbow 1pc
- d. Steel tubes 3pc

ORDER NO.	DISPOSAL CAPACITY L/MIN	L	W	H	M	N	A	B	D	J	K	INLET O	OUTLET P	MOTOR	N.W (kgs)	GW (kgs)	CODE NO.
MC-20	20	464	130	205	65	145	398	100	11	230	300	PF1 1/2"	PF1 1/2"	220V3Ø,25W	18	20	2020-010
MC-40	40	464	150	205	65	145	398	120	11	250	300	PF2"	PF2"	220V3Ø,25W	20	23	2020-011
MC-60	60	464	206	205	60	150	398	176	11	306	300	PF2"	PF2"	220V3Ø,25W	25	28	2020-012
MC-80	80	464	242	205	60	150	398	212	11	342	300	PF2"	PF1 1/2"	220V3Ø,25W	30	40	2020-013
MC-120	120	530	270	245	68	185	456	230	11	380	345	PF1 1/2"	PF3"	220V3Ø,40W	50	65	2020-014
MC-160	160	530	354	245	68	185	456	314	11	464	345	PF3"	PF3"	220V3Ø,40W	60	75	2020-015



MC+PF60

APPLICABLE TO THE FOLLOWING WORKING MACHINES

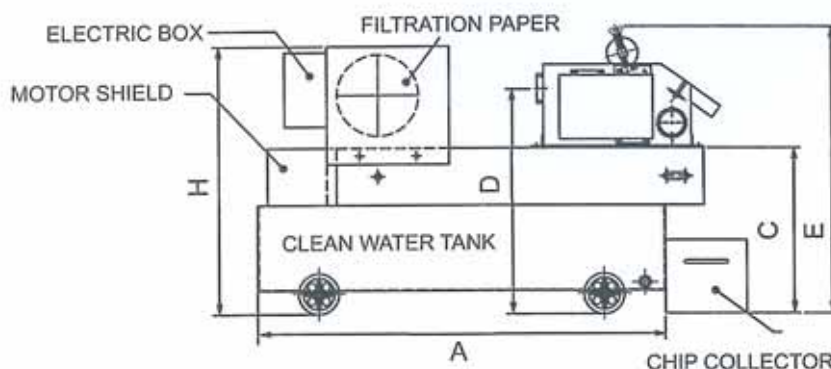
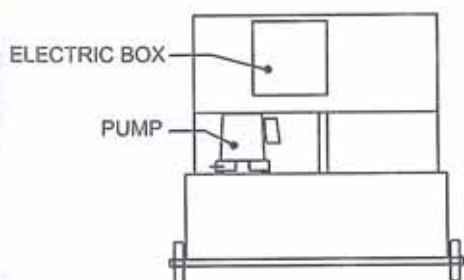
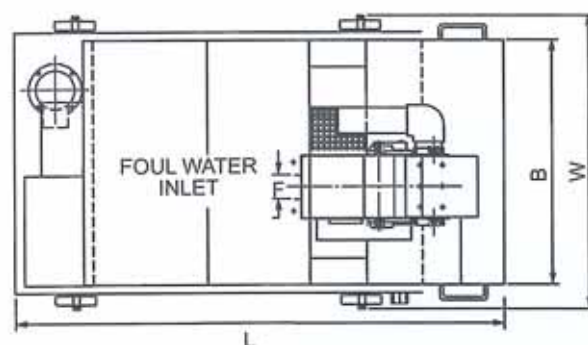
- Plane grinding machine.
- Fine-grinding machine.
- Honing machine.
- Deep-hole drill.
- Internal/exterless cylinder grinder.
- Centerless grinder.
- Please specify the power voltage in your order list.
- Specifications are subject to change without notice.

FEATURES

- Applicable to both ferrous and non-ferrous metals.
- Filtration effect depends on paper accuracy. Use 50 μ , 30 μ , or 15 μ .
- Rough filtration for chip in coolant with magnet and then fine filtration for impurities with paper will save the paper and upgrade filtration accuracy

DIMENSION DIAGRAM

- Standard accessory: one roll paper 30 μ



MAGNETIC SEPARATOR & PAPER FILTER SPECIFICATIONS

ORDER NO.	DISPOSAL CAPACITY L/MIN	WATER TANK CAPACITY	L	A	B	C	D	E	F	H	W	PUMP		PAPER MOTOR	PAPER	REMARKS	N.W (kgs)	GW (kgs)	CODE NO.
												HP	OUTLET						
MC+PF-20	20	100	1050	850	600	400	550	655	PF1 1/2"	610	720	1/8	PF 1/2"	25W	W:500MM L:90M	NO wheels	115	140	2020-020
MC+PF-40	40	120	1200	1000	600	400	550	705	PF2"	660	720	1/8	PF 1/2"	25W			150	175	2020-021
MC+PF-60	60	140	1350	1150	600	400	555	705	PF2"	660	720	1/8	PF 1/2"	25W			165	200	2020-022
MC+PF-80	80	160	1500	1300	600	400	555	705	PF2"	660	720	1/4	PF 3/4"	25W			190	225	2020-023
MC+PF-120	120	210	1500	1300	800	400	590	750	PF2 1/2"	740	920	1/2	PF 3/4"	40W	W:700MM L:90M		235	275	2020-024
MC+PF-160	180	260	1800	1600	800	400	605	750	PF3"	740	920	1/2	PF 3/4"	40W			290	335	2020-025